

GTRADERS Co.,Ltd

www.gtaders.co.kr





Company Introduction

귀사의 일익 번창하심을 기원합니다.

산업 및 선용품 유공압 장비 전문 제조 유통기업
주식회사 지트레이더스입니다.

우리는 다양한 유공압 기계류를
온·오프라인 시장을 통해 소개하고 있으며,

오랜 경험과 축적된 기술력을 바탕으로 하여,
세심하고 열성적인 엔지니어들과의 협업을 통해
실용적이고 합리적인 제품을 시장에 선보이고 있습니다.

선용품 시장을 선도하여 한발 앞선 기술력과
경쟁력 있는 가격으로 최상의 품질을 제공하겠습니다.

당신의 비즈니스를 지트레이더스와 함께 이루시길 기원합니다.
감사합니다.

대표이사 이 해 동

TABLE OF CONTENTS



01 회사소개

- 회사 소개 및 인삿말
- 연락처 및 위치

02 제품소개

- 제품 소개

03 실적 및 개발 현황

BEST
PRODUCT

QUALITY
GUARANTEED

TRUST
SERVICE



Head Office

- 205HO,129DONG, 41,
Yutongdanji 1-ro,
Gangseo-gu, Busan,
Republic of Korea

Factory

MARINE PLUS (Subsidiary Company)

- 228DONG, 12,
Yutongdanji 1-ro,
97beon-gil,
Gangseo-gu, Busan,
Republic of Korea

CONTACT US

TEL. 051-941-2556

FAX. 051-980-6693

E-MAIL. gtraderskr@gmail.com

사업분야

무역
(수출입)

유통

제조

설계

주문제작

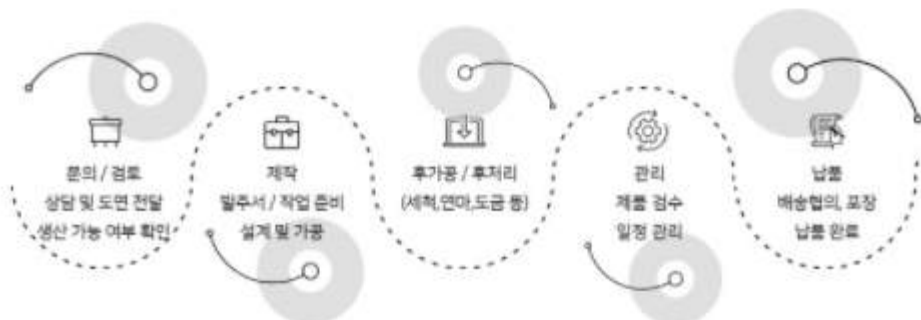
사후관리
서비스

조직도

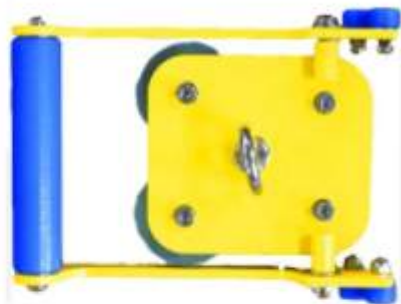
지트레이더스는 존중과 수평적인 조직문화를 위해 노력하고 있습니다.
서로를 존중하는 열정적인 직원들과 함께하는 팀워크로 개인과 회사의 발전,
그리고 더 나은 제품과 서비스를 위해 노력하겠습니다.



주문제작 프로세스



Pilot Ladders Safety Magnet Locker Magnet type



MODEL	PAINTED	MATERIAL	LIFT RATING (KG)	PULL RATING (KG)	DESCRIPTION (W x L x H)	WEIGHT (KG)	CERT
LLM-300	POWDER COATING	S.STEEL	300	320	250 x 195 x 80	3.9	DNV

Aluminum Alloy Accommodation Ladders Safety Pneumatic Locker Pneumatic type



MODEL	PAINTED	MATERIAL	LIFT RATING (KG)	PULL RATING (KG)	DESCRIPTION (W x L x H)	WEIGHT (KG)	CERT
LLP-300	POWDER COATING	S.STEEL	300	320	250 x 240 x 100	3.0	DNV



HIGH PRESSURE CLEANER

FEATURE

- ▶ H.P PUMP/MOTOR/GUN+LANCE+NOZZLE
→ Made In ITALY
- ▶ FRAME(BODY) : **STAINLESS STEEL**



MODEL	ELECTRIC SUPPLY	MAX PRESSURE	FLOW CAPACITY	POWER	DIMENSION	WEIGHT (KG)
HPC-200	220/380/440V 50/60HZ 3PH	220BAR	15 ltr/min	5.5KW (7.5HP)	700*900*500	70
HPC-350	220/380/440V 50/60HZ 3PH	350BAR	22.7 ltr/min	15KW (20HP)	950*550*600	98
HPC-500	220/380/440V 50/60HZ 3PH	510BAR	13.3 ltr/min	11KW (15HP)	950*550*600	93
HPC-500	220/380/440V 50/60HZ 3PH	510BAR	16 ltr/min	15KW (20HP)	950*550*600	98

STANDARD ACCESSORIES



H.P GUN



LANGE 70CM



NOZZLE 1PC



H.P HOSE 10M



WATER HOSE 10M

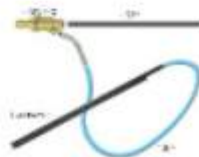
OPTIONAL ACCESSORIES



HOSE REEL



ROTATING NOZZLE

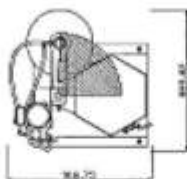
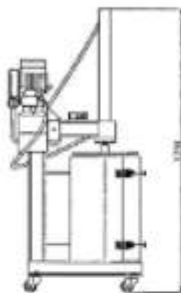


SANDING NOZZLE



GARBAGE COMPACTOR

Vertical Rubbish Hydraulic Baler



Technical Parameters

Model	GBC-3	
Pressure of cylinder	2 tons	
Hydraulic cylinder	YG50/35-680	Made by ourselves
Chamber Volume	105L	
Cycle time	38 S	Unload
Pressure of Hydraulic System	10 Mpa	
Motor Power	0.75 KW / 1 HP	Speed of revolution 1750 r / min
Feeding Device	Manual	
Operation Mode	Handle	
Rubbish Bag	800 x 1000 mm	
Voltage	110/220V 1P, 220V 1P	The voltage can be customized
Oil	L - HM 46	Ambient temperature 0-30°C
Oil reservoir	10L	
Machine Overall Dimension	900mm X 920mm X 1800mm (L x W x H)	
Machine Weight	185kg	



AIRLESS PAINT SPRAY PUMP

Series 28-1

MODEL : MAT - 301		
STANDARD SPECIFICATION	AIR MOTOR	MAT28100
	DISPLACEMENT PUMP	MAT28200
	SURGE TANK	MAT28300
	REGULATOR	MAT28400
	SUCTION	MAT28500
	CART	MAT28600
FLUIDE PRESSURE RATIO		28:1
DELIVERY		1 gpm : 3.8 liter/min
MAXIMUM PUMP SPEED		60 cycle/min
STROKE		120 mm
WEIGHT (NET/PACKING : Kgs)		30 : 40
MAXIMUM AIR INLET PRESSURE		100 psi (7 bar)
MAXIMUM OUTLET PRESSURE		2800 psi (195 bar)



Series 45-1

MODEL : MAT - 451		
STANDARD SPECIFICATION	AIR MOTOR	MAT45100
	DISPLACEMENT PUMP	MAT45200
	SURGE TANK	MAT45300
	REGULATOR	MAT45400
	SUCTION	MAT45500
	CART	MAT45600
FLUIDE PRESSURE RATIO		45:1
DELIVERY		3.3 gpm : 12.5 liter/min
MAXIMUM PUMP SPEED		60 cycle/min
STROKE		117 mm
WEIGHT (NET/PACKING : Kgs)		85 : 109
MAXIMUM AIR INLET PRESSURE		100 psi (7 bar)
MAXIMUM OUTLET PRESSURE		4500 psi (310 bar)



Series 63-1

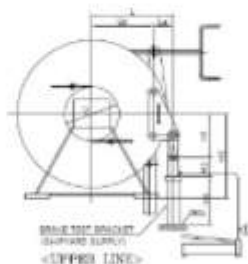
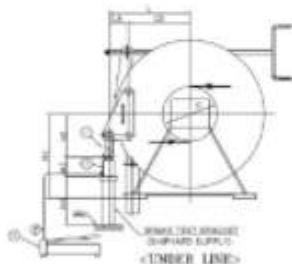
MODEL : MAT - 631		
STANDARD SPECIFICATION	AIR MOTOR	MAT45100
	DISPLACEMENT PUMP	MAT63200
	SURGE TANK	MAT45300
	REGULATOR	MAT45400
	SUCTION	MAT45500
	CART	MAT45600
FLUIDE PRESSURE RATIO		63:1
DELIVERY		3 gpm : 11 liter/min
MAXIMUM PUMP SPEED		60 cycle/min
STROKE		117 mm
WEIGHT (NET/PACKING : Kgs)		89 : 113
MAXIMUM AIR INLET PRESSURE		100 psi (7 bar)
MAXIMUM OUTLET PRESSURE		6300 psi (430 bar)

WIRE ROPE LUBRICATION EQUIPMENT



MODEL	TYPE	CAPACITY(L)	GREASE CONTAINER	RATIO	HOSE(M)	WEIGHT(KG)
MPWL-500	PNEUMATIC	500	STEEL	55:1	5	22
MPWL-1000	PNEUMATIC	1000	STEEL	55:1	5	25

BRAKE TEST KIT



H1 : 405 mm
H2 : 180 mm
H3 : 1000 mm
H4 : Confirms to yard

STANDARD ACCESSORIES

- HYDRAULIC PUMP
- HYDRAULIC RAM
- RAM ADAPTOR
- WINCH ADAPTOR
- H/T BOLT NUT SET





PNEUMATIC DIAPHRAGM PUMP



BRAND :  **SEMPO**

Size : 1/2", 1", 1-1/2", 2", 3", 4"

CODE	DESCRIPTION	UNIT
591601	Pneumatic diaphragm aluminium pumps QBK type 1"	SET
591602	Pneumatic diaphragm aluminium pumps QBK type 1-1/2"	SET
591603	Pneumatic diaphragm aluminium pumps QBK type 2"	SET
591604	Pneumatic diaphragm aluminium pumps QBK type 3"	SET
591605	Pneumatic diaphragm aluminium pumps QBK type 1/2"	SET
591606	Pneumatic diaphragm aluminium pumps QBK type 4"	SET
591611	Pneumatic diaphragm plastic pumps 1/2" QBK type	SET
591612	Pneumatic diaphragm plastic pumps 1" QBK type	SET
591613	Pneumatic diaphragm plastic pumps 1-1/2" QBK type	SET
591614	Pneumatic diaphragm plastic pumps 2" QBK type	SET
591701/16	Pneumatic diaphragm stainless steel pumps QBK type 1"	SET
591703/21	Pneumatic diaphragm stainless steel pumps QBK type 1-1/2"	SET
591706/25	Pneumatic diaphragm stainless steel pumps QBK type 2"	SET
591708/29	Pneumatic diaphragm stainless steel pumps QBK type 3"	SET

PNEUMATIC VACUUM CLEANER



	APV-20 (20L)	APV-40 (40L)	APV-70 (70L)
STANDARD (W * L * H)	440*440*590	460*510*830	600*625*970
PRESSURE	2000	2000	3000
AIR CONSUMPTION (L/min)	600	600	900
AIR SUCTION RATE (L/min)	6000	6000	9000
Weight(kg)	7.2	10.6	21
Material	P.P / Stainless		



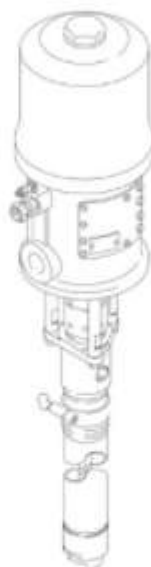
AIR WINCH

TYPE	LIFTING CAP	GEAR RATIO	SPEED FREE-LOAD	WIRE ROPE	AIR MOTOR TYPE	AIR CONSUMPTION FREE LOAD	UNIT WEIGHT
APW-100	100KG	40:1	35mtrs/min	3mm X 33mm	APM-F1	0.30m3/min	60kg
APW-150	150KG	60:1	30mtrs/min	3mm X 33mm	APM-F1	0.30m3/min	75kg
APW-200	200KG	40:1	30mtrs/min	5mm X 33mm	APM-F3	180cfm	85kg
APW-250	250KG	60:1	20mtrs/min	5mm X 33mm	APM-F3	180cfm	85kg
APW-300	300KG	80:1	18mtrs/min	5mm X 33mm	APM-F3	180cfm	85kg



AIR OPERATED WASH PUMP

AWP-101



MAT-101

Model	AWP-101	MAT-101
MATERIAL	STAINLESS STEEL	STAINLESS STEEL
PRESSURE RATIO	10:1	10:1
MAX. DELIVERY	11 liter / min	22 liter / min
OPERATING AIR PRESSURE	3~8.5 kgf/cm ²	3~
MAX. DISCHARGE PRESSURE	214 kgf/cm ²	214 kgf
PUMP DIMENSION	10 · 12 · 87 cm	12 · 12 · 87
PUMP WEIGHT	15 kg	13 kg
NOISE	70 ~ 80 db	70 ~ 80 db
AIR MOTOR STROKE	75 mm	105 mm
MAX SPEED	150 cycle / min	60 cycle / min
OUPT PERCYCLE	27cc	27 cc



MAPE CLEANING KIT



DUBBLE ACTION AIR DRIVEN MEMBRANE PUMP	
CAPACITY	50 liters/min
AIR PRESSURE	2 - 7 bar
WETTED PARTS	Polypropylene
MEMBRANES	Hytrel, PTFE plated
SEATS	Polypropylene
SEALS	PTFE
AIR CONNECTION	1/4" BSPF
SUCTION / DISCHARGE	1/2" BSPF
SPRAY LANCE	
MATERIAL	Aluminium (anodized)
LENGTH	Adjustable 2, 4 - 7, 9 meters
WETTED PARTS	Brass, Stainless Steel, PVC
PRESSURE (Max.)	20 bar
HOSES, COMPLETE WITH QUICK CONNECTORS	
Suction, 10 meters	reinforced PVC, 40 bar, 16mm ID
Discharge, 50 meters	reinforced PVC, 40 bar, 16mm ID
Air, 20 meters	reinforced PVC, 40 bar, 8mm ID
NOZZLES MOUNTED ON ADJUSTABLE BALL CONNECTOR	
Foamjet nozzle	Brass, 0°, 10lit/min at 4 bar
Flatspray nozzle	Brass, 25°, 14 lit/min at 4 bar
GUIDEWIRE KIT / OPTION	
Steel wire / Support line	35 meter each
Pulley system	Steel / Polypropylene



PORTABLE SAND BLASTING EQUIPMENT



SB-10HP / SB-20HP



SB-80HP

Portable dustless blasting equipment with superior productivity, suction power and blasting media recycling

- No dust or blasting abrasive flying around
- Dustless blasting in enclosed spaces where regular blasting is not permitted
- No need for special blasting rooms
- The blasters are mobile, flexible and offers low start-up costs

MODEL	SB-10HP	SB-20HP	SB-80HP
TANK CAPACITY(L)	10	20	80
TANK O.D(mm)	250	350	400
TANK HEIGHT (mm)	400	550	850
TANK WEIGHT(kgs)	8	12	22
TANK MATERIAL	STEEL	STEEL	STEEL
TANK CAPACITY(Gallon)	2.6	5	21
NOZZLE SIZE(mm)	5.0	5.0	3.6
INJECTION PRESSURE(psi)	62~125	62~125	65~125
HOSE SIZE inch(")	5/8	5/8	1/2
NOTE	3/8	3/8	INCLUDED FUNNEL & MASK



MAJOR CUSTOMER



TECHNIQUE&DEVELOPMENT HISTORY



CATALOG & BROCHURE

GTRADERS Co.,Ltd

Enjoy your Business

E-mail : gtraderskr@gmail.com

Call : 051-941-2556