

X1 for the adults(**USD239**;MOQ:1 sample,**USD480**/pc):

Size(Folded):1190x575x535mm;

Size(Unfolded):1190x575x1150mm;

Power:36V 350W toothless brushless motor(instantaneous power:500W);

Battery:36V 7.5Ah 18650 lithium-ion cell(Intelligent BMS protection);

Battery capacity:7500MAh;Limited charge voltage of battery:42V;

Recharged: 500-1000times;Rated power of charger:84W;

Charging time:3-5h;Charging voltage:100-240V/50-60Hz;

Max.loading:130kg,energy saving mode:100kg;Fixed speed cruise;

Max.speed:25 km/h,energy-saving mode:20km/h;Max.range:30km;

Max.climbing slope:15°;Mini ground clearance:87.5mm;

Brake system:Front E-ABS Anti-lock,Rear Disc brake;

Frame material: Aluminum alloy; IP54 waterproof;

Front LED light,Rear brake light;

Front LCD screen:Power display,speedmeter,range,time;

Wheels:9 inch honeycomb rubber tire;Motor size:6.7inch;

Certification:**UL2272**/ASTM/**CE**/ABE;

Carton Size:1100x530x195mm;G.W./N.W.:21.3kg/16kg;

Container:260pcs/20FT,605pcs/40HQ;



L2 for the adults(**USD229**;MOQ:1 sample,**USD450**/pc):

Size (Folded):1110x490x510mm;

Size (Unfolded):1110x490x1185mm;

Power:36V 350W toothless brushless motor(instantaneous power:500W);

Battery:36V 7.5Ah 18650 lithium-ion cell (Intelligent BMS protection);

Battery capacity:7500MAh; Limited charge voltage of battery: 42V;

Recharged:500-1000times;Rated power of charger:84W;

Charging time:3-5h;Charging voltage:100-240V/50-60Hz;

Max.loading:130kg,energy saving mode:100kg;Fixed speed cruise;

Max.speed:25 km/h,energy-saving mode:20km/h;Max.range:30km;

Max.climbing slope:15°;Mini ground clearance:87.5mm;

Brake system:Front E-ABS Anti-lock + Rear ventilated disc brake;

Frame material:aircraft grade aluminum alloy; IP54 waterproof;

Front LED light,Rear brake light,F/R turning light and R license plate

Front LCD:speedmeter,battery capacity,gear,bluetooth;

Wheels:8.5" inch honeycomb rubber tire;Motor size:6.7"inch;

Shock absorber:Rear double independence hydraulic pressure, Front

Certification:**UL2272**/ASTM/**CE**/ABE;

Color optional:classical black,tiffany blue,pearl pink,purple red;

Carton Size:1140x530x190mm;G.W./N.W.:16kg/14kg;

Container:290-300pcs/20FT,650pcs/40HQ;



L1 for all people(**USD189**;MOQ:1 sample,**USD380**/pc):

Size(Folded):1050x430x450mm, (Unfolded):1050x430x1190mm;

Power:36V 350W toothless brushless motor(instantaneous power:500W);

Battery:36V 7.5Ah 18650 lithium-ion cell (Intelligent BMS protection);

Battery capacity:7500MAh; Limited charge voltage of battery:42V;

Recharged: 500-1000times;Rated power of charger:84W;

Charging time:3-5H;Charging voltage:100-240V/50-60Hz;

Max.loading:120kg,energy saving mode:100kg; Fixed speed cruise;

Max.speed:28 km/h,energy-saving mode:20km/h;Max.range:30km;

Max.climbing slope:10°;Mini ground clearance:87.5mm;

Brake system:Front Electric+Rear fender brake;

Frame material:aircraft grade aluminum alloy; IP54 waterproof;

Front LED light,Rear brake light;

Front LCD:power,speedmeter,gear,range,time;

Wheels:8.5"inch honeycomb rubber tire;Motor size:6.7"inch;

Certification:**UL2272**/ASTM/**CE**/ABE;

Container:370pcs/20FT,750pcs/40HQ;

Carton Size:1070x510x165mm;G.W./N.W.:13.1/11.8kg.



L11 for all people(**USD139**;(MOQ:1 sample,**USD300**/pc):

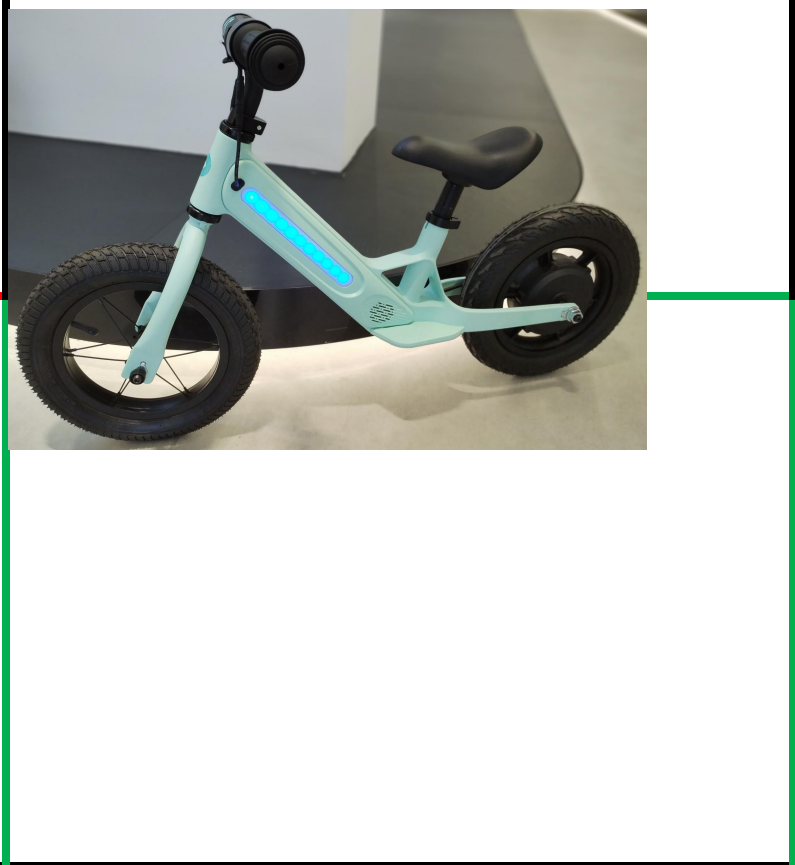
Motor:36V 250W(The peak can reach:300W)Battery:36V 7.5Ah;



(Comprehensive battery life based on 75KG load);
 Motor Power:Max 500w,36V,12.5Ah;
 Battery. Rechargeable 50 cell Li- ion battery;
 Power Requirement:AC 100-240V. 50/60Hz;
 Charging Output:54.6V/2A;Max Hill Incline:above 15 degree;
 Brake Type: Front and rear mechanical brakes+ EBS electronic brake;
 Brake Tire Size:10inch(25.4cm);Charging Time:Up to 7 hours;
 Tire Type:No need for pneumatic tires;
 Suspension: Front and rear suspension;Water-Resistance:IPX 4;
 Unfolded Size:112x50x122cm;Folded Size:112x50x53cm;
 Container:150pcs/20FT,350pcs/40HQ;Certificate: **CE,ROHS,ABE**;



B3 for kids(**USD129**;MOQ:1 sample,**USD300**/pc):
 Motor power:180W,24V/2-2.5AH Lithium battery;
 Charger Voltage:110-220V Ka,Max. speed:14.5 kms/h;
 Charging time:3h,Range per charge:14.5 kms;
 Max. loading:70kgs,Max. Climbing:5degree;
 Tire size:12inch air tyre,Brake:mechanical integration brake;
 SEAT:Adjustable Seat Height,Structure:Magnesium alloy;
 Shock Absorption:tyre air shock;
 Certificates:**CE/UL2272** TESTREPORT;
 Size:890 x 145 x 510MM,NW/GW:7.26/8 kg;
 Packing size:900 x 160 x 530MM;
 Loading qty:350-360pcs/20'FCL 850-890pcs/40'HQ".



B2 for teenagers(**USD189**;MOQ:1 sample,**USD450**/pc):
 Motor:200W,21V,Gear brushless motor(with gearbox);
 Battery:Lithium battery 21V 5.4Ah; Charger:21V/1.3A;
 Frame:Hing quality high strength steel(3.6kg);
 Max Speed:20 km/h -5%;Max Load:50kg;chain drive;
 Range:15km, Charging time:4-5 hours;
 Battery life time:charging cycle 500 times,capacity decrease:100% to 70%;
 Max Climbing Limit:15°(Start distance:15m,20km/h,Climbing
 Brake mode:Rear wheel holding brake(Type 90);
 Wheel:16 inch tire; Suspension:Front and rear inflatable tire;
 Brake bracket life time:<3.5meters/second;Certificates:**CE/UL2272**
 TESTREPORT;
 Ground clearance:150mm;Waterproof grade:IPX4;
 Quality assurance:1 Year;N.W.:12.9kg±3%,G.W.: 15.3kg±3%;
 Product Size:1250 x 550 x 650MM,Packing Size:1050 x 225 x 480 MM;
 Qty in container 1 x 40GP:570PCS.20FT:250pcs.

Remarks:
 1. Delivery time(Electric products):Within 35 work-day(Gasoline products 15 work-day) after receipt of the deposit payment;
 2. Payment terms: 30%T/T deposit,the rest balance the original BL & L/C at sight (in advance).
 3. Quality warranty(Services after sales): chassis frame for three years,engine,front/rear fork,swing arm,shock absorber,battery,motor,controller, charger and so on main parts for one year,other parts for six month; Offer 1% free easy-damaged parts(light,plastic parts,stand bar,brake line,brake pad,brake disc,chain,tire,throttle,grip bar,screw,control line,oil line,mudguard,grip bar,mirror,seat and so on).
 4. Powerful Bike motocross(HS8703101100,HS8703234210)for racing sports;Folding skateboard scooter balance bicycle,city bicycle and mountain bike(HS9503001000)for going to work,study or fun instead of walking.Trade Mark:KKA,Supersports,Apollo,RFN,RFZ,RXF. A part of products with EEC,COC,EURO 5,UL2272,CE authentication.
 6. The above quote is valid within 90 day after sending to customers and based above 1x20FT order(FOB NingBo China by sea).
 Tel.:+86 18658922206,WhatsApp.:+86 13307015139,E-mail: **cnsports@foxmail.com** , **cnsunmysports@gmail.com** ,**cnsupersports@sina.com** ,Skype: Davistomhenry; DingDing: cnsupersports.