



偏光检测系列

以人为本·诚信当先·创新不断
PEOPLE TRUSTABLE CREATIVE

SERIES OF POLARIZING DETECTION

Handheld stress viewer PSV-202-D

Equipment Application

The handheld Polariscopes (Ref.PSV-202-D) has been designed to cover a wide range of strain viewing applications. It can be applied to the quality control inspection of glass and plastics components and may be employed as a vertical or horizontal viewing instrument. Different from common bench type Polariscopes, this handheld Polariscopes adopt separating design, that means the analyzer and polarizer are movable. In this way, the net weight is almost reduced to half. his lightweight design make it more convenient to carry. The working space available within the unit enables a wide variety of components to be accommodated for hand held examination under polarizing light., such as fish tank.

Application area

- any transparent glass products such as : fish tank , mobile phone cover, lighting tube, solar glass ,automobile glass,sapphire, glass container , glass handicraft.
- any transparent plastic samples such as :plastic bottle , cosmetic bottle , beverage bottle, plastic tray, plastic film

Technical parameter	
Viewing field	200mm*200mm
Overall size	300mm*300mm*80mm
Voltage	220V
Light source	White fluorescent lamp
Weight	4.5KG

手持式/ 分离式偏光应力仪 PSV-202-D

设备用途

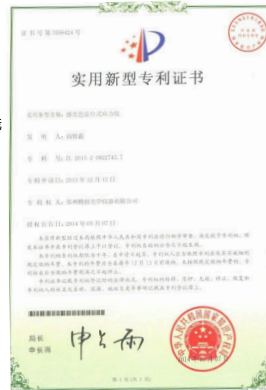
PSV-202-D 应力测试仪应用范围广泛。该仪器可以手持检偏模组，对玻璃和塑料配件进行检测，大多运用于品控。PSV-202-D 有足够大的使用空间供各种产品进行测量。测量过程中，主要通过手持检偏组件对被测物体在偏光下进行观察测量。

标准配置的 PSV-202-D 包括一个光源，一个装有线性偏振片的起偏组件和另一个装有线性偏振片的检偏组件。PSV-202-D 应力仪中已经置入了一块全波盘。

PSV-202-D 应力测试仪使用时手持组件与起偏组件需正对放置。机身上有有 2 对橡胶脚垫减震器,便于手持组件及起偏组件可平稳放置在操作台上。

应用领域

- 适合于检测透明的及复杂结构的玻璃产品。
- 适合于检测透明的塑料产品等。

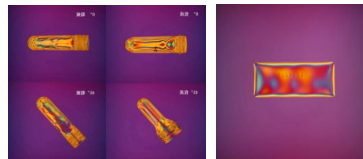


感光色法台式应力仪

15

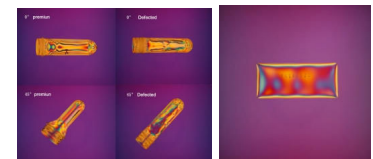
偏光应力仪系列

技术参数	
应力测定范围	0-560nm
起偏镜	200 * 200mm
产品尺寸	300*300*80mm
电压	220V
光源	暖白色 LED 板灯 10W
重量	4.5KG



16

Series of polarized stress meter





偏光检测系列

以人为本·诚信当先·创新不断
PEOPLE TRUSTABLE CREATIVE

SERIES OF POLARIZING DETECTION

Polarized stress viewer PSV-202

Equipment Application

Polarized light principle is adopted to observe and analyze the internal stress of transparent plastic and glass products, which is effective to measure product stress timely and ensure and improve the product quality.

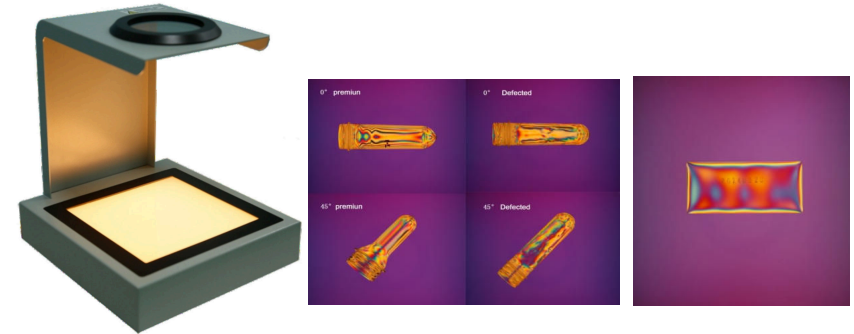
Application area

Suitable for checking transparent lighting tube, solar glass, plastic bottle billet, glass handicraft, sapphire, automobile glass and so on.

Equipment Features

The instrument is able to observe the internal stress distribution of transparent glass and plastic through the display of different colors, then to analyze the internal stress situation intuitively, and further to analyze the internal quality products.

Technical parameter	
Polarization analyzer	Diameter 100mm
Polarizer	200*200mm
Measuring height	233mm
Light source	LED light



残余应力仪 PSV-202

设备用途

本设备采用偏振光原理可以对透明的玻璃及塑料制品的内应力进行定性观测分析，便于用户及时有效的把控其产品应力，有助于保证、提升产品质量。

应用领域

适用于检查透明的照明灯管、太阳能玻璃、塑料瓶坯、玻璃工艺品、蓝宝石、汽车玻璃等。

设备特点

本设备可以观察到透明玻璃、塑料的内应力分布，通过颜色不同的展现，从而直观地分析出内应力状况，从而进一步分析出产品内部质量问题。



感光色法台式应力仪

技术参数	
检偏镜尺寸	直径 100mm
起偏镜尺寸	200*200mm
测量空间高度	233mm
光源	LED灯

