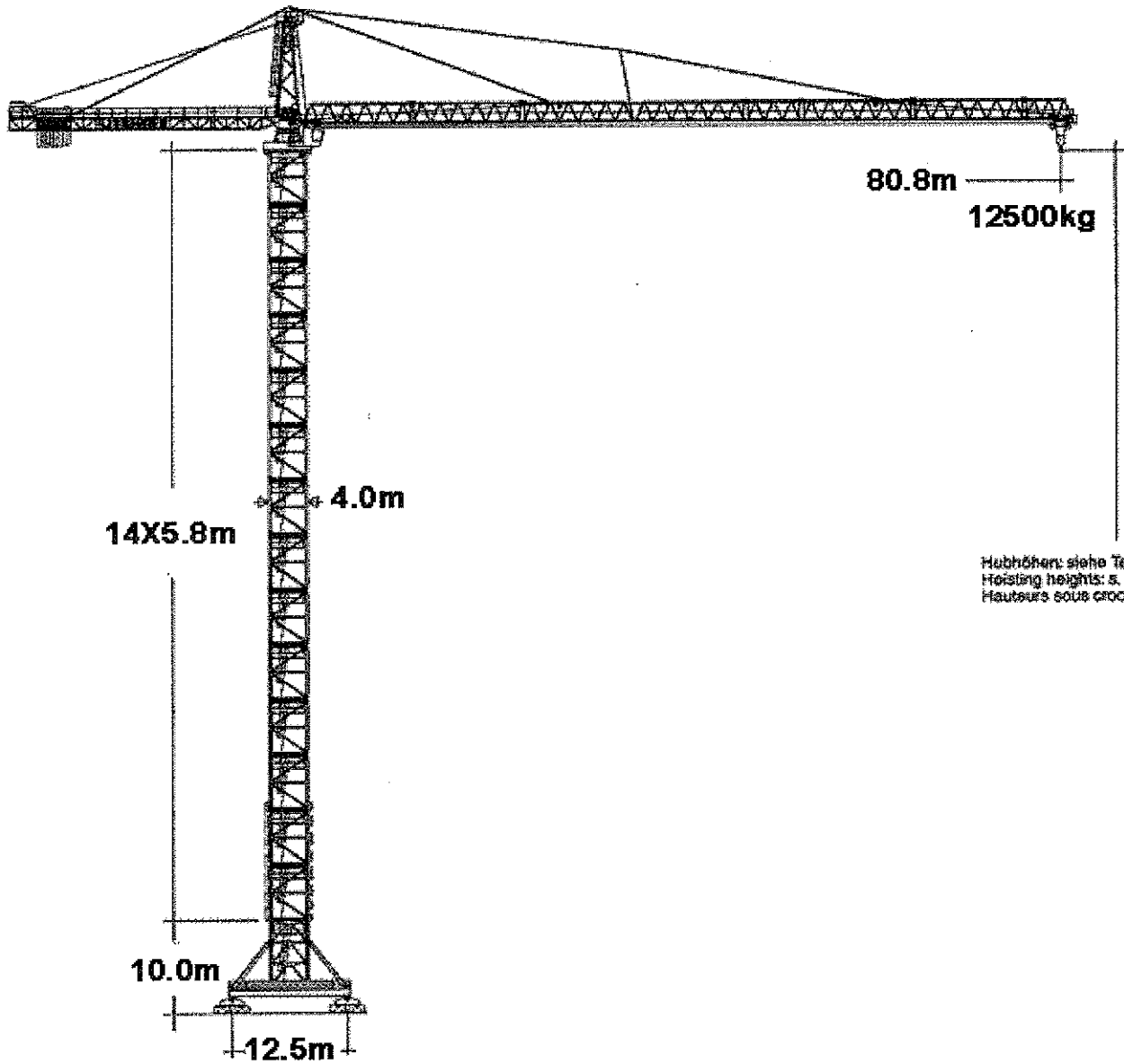


**Tower Crane  
Grue à tour**

# **Turmdrehkran 1250 HC**

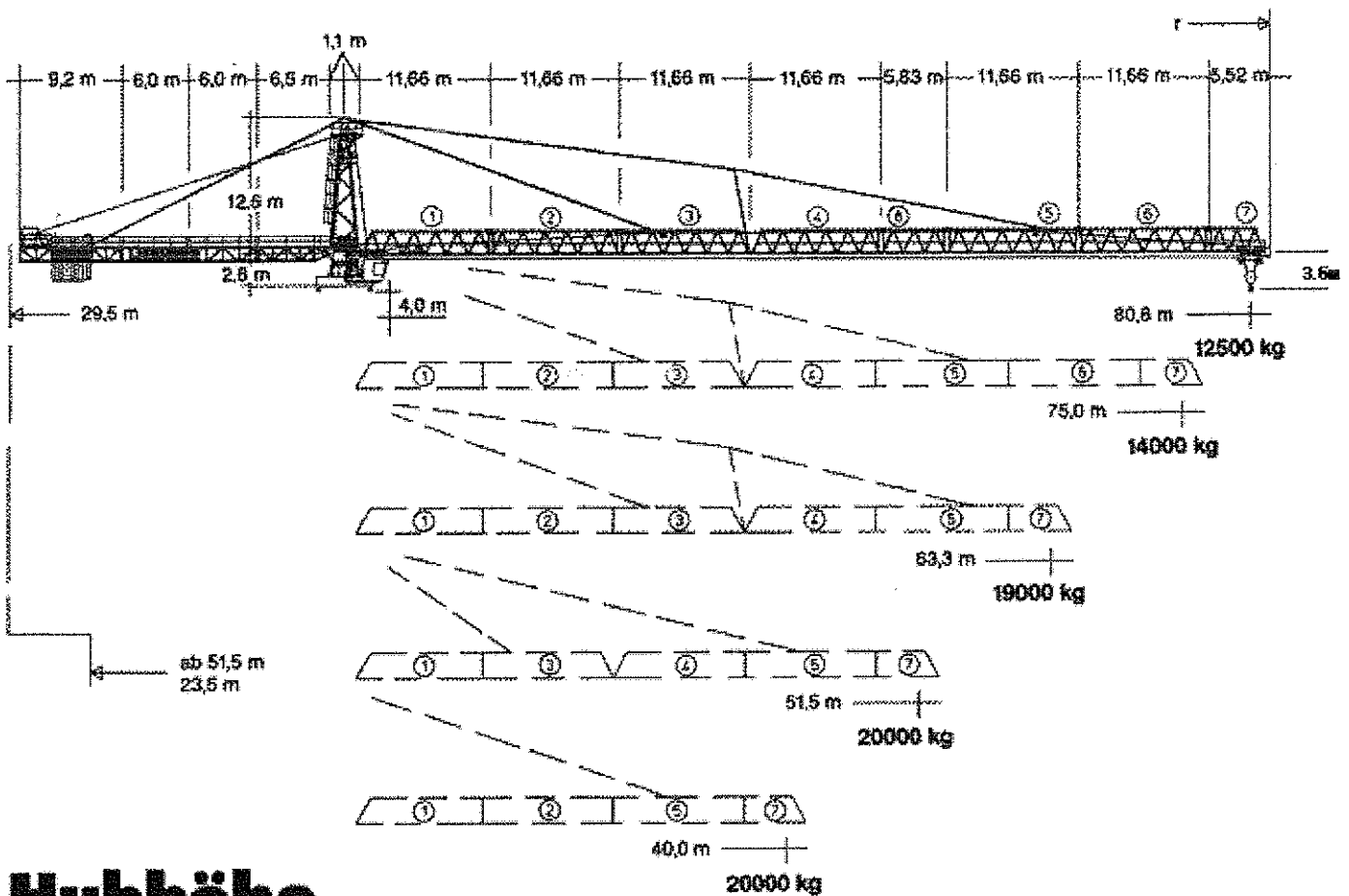


Hubhöhen: siehe Tabellen  
Hoisting heights: s. tables  
Hautours sous crochet: v. tableaux

Turm 1250 HC  
tower / la mât  
max. 90,4 m

Maßstab: 1 : 700  
scale / échelle

# **LIEBHERR**



# Hubhöhe

## Hoisting height

### Hauteur sous crochet

mit Turm with tower avec mât		<b>1250 HC</b>	
zurüglich Turmstücke plus tower sections plus éléments de mât			
0	m	- 0,3	9,2
1		5,5	15,0
2		11,3	20,8
3		17,1	26,6
4		22,9	32,4
5		28,7	38,2
6		34,5	44,0
7		40,3	49,8
8		46,1	55,6
9		51,9	61,4
10		57,7	67,2
11		63,5	73,0
12		69,3	78,8
13		75,1	84,6
14*		80,9	90,4
15*		86,7	-

\* Führungsstück nach Montage ablassen. / Lower guide section after erection. / Baissez la cage télescopique après le montage.  
 Weitere Hubhöhen sowie Klettern im Gebäude auf Anfrage. / Further hoist heights and climbing in the building on request. /  
 Hauteurs sous crochet plus élevées en hissage dans le bâtiment sur demande.

# 1250 HC

# Ausladung und Tragfähigkeit

Radius and capacity

Portée et charge

# 1250 HC




Auslagerlänge Length of jib Longueur de flèche		max. kg m/kg	m/kg										
m	r		40,0	44,0	48,0	51,7	56,0	60,0	63,3	66,0	72,0	75,0	80,8
80,8	(r = 82,8)	4,0-82,8 20000	20000	20000	20000	20000	18680	17340	16370	15140	14220	13590	12500
75,0	(r = 77,0)	4,0-53,9 20000	20000	20000	20000	19210	17850	16850	15580	14650	14000		
63,3	(r = 65,3)	4,0-53,5 20000	20000	20000	20000	20000	20000	20000	19000				
51,7	(r = 53,7)	4,0-51,7 20000	20000	20000	20000								
40,0	(r = 42,0)	4,0-40,0 20000	20000										

Tragfähigk. kg Capacity Charge	Ausl./Rad./Port. m												
20000	40,0	44,0	48,0	51,7	56,0	60,0	63,3	66,0	72,0	75,0	80,8		
18000													
16000													
14000													
12000													
10000													
8000													
6000													
4000													
2000													
0													

## Geschwindigkeiten

Speeds /  
Vitesses

	U/min 0,6 st./min tr./min	4 x 10,6 kW
	5,0 / 8,0 / 50,0 / 90,0 m/min	13,0 kW + WSB
	25,0 m/min	4 x 10,6 kW
<b>Anschlußwerte Kranoberteil</b> Power requirement, upper part Puissance requise, partie supérieure		<b>Hubwerk</b> Hoist gear Mécanisme de levage
		64 kW 80 kW 110 kW
kW		119,4 135,4 165,4
kVA		128,0 143,0 178,0

Hubwerk Hoist gear Mécanisme de levage	Gang Gear Rapport	kg	m/min
64,0 kW WSB Elmag Hubhöhe 115,0 m (2 Lagen) Hoisting height (2 layers) Hauteur sous crochet (2 couches)	1	20000	2,0 / 17,0
	2	10200	3,0 / 32,0
	3	4400	6,0 / 63,0
80,0 kW WSB Elmag Hubhöhe 209,0 m (6 Lagen) Hoisting height (6 layers) Hauteur sous crochet (6 couches)	1	20000	2,0 / 14,0
	2	10400	5,0 / 34,0
	3	4600	8,0 / 63,0
	4	1700	12,0 / 112,0
110,0 kW WSB Elmag Hubhöhe 83,0 m (2 Lagen) Hoisting height (2 layers) Hauteur sous crochet (2 couches)	1	20000	2,8 / 28,0
	2	13700	4,4 / 44,0
	3	6000	9,1 / 91,0
	4	1600	23,2 / 232,0

# Technische Daten - Technical data

# Caractéristiques techniques

Kranoberteil			L (m)	B (m)	H (m)	kg*		
Pos. Item Rep.	Anz. Qty. Qty.	Cabin			2.30	1.75	2.76	1500
2	1	Slewing platform cpl. with ball			3.00	3.00	2.80	18000
3	1	Cross-member for slewing ring support			4.40	2.90	1.10	12100
4	2	Supporting structure of slewing ring support			3.10	0.20	0.80	380 320
5	2	Cross-member for slewing ring support			4.83	1.00	1.55	4200
6	1	Tower head section			12.20	2.60	1.40	9100
7	1	Counter-jib head			9.29	2.50	1.65	5100
8	1	Counter-jib heel section			6.77	1.74	1.48	2600
9	2	Intermediate counter-jib section			6.20	1.74	1.48	3000
10	1	Jib heel section			12.10	1.81	2.53	⊙ 5400
11	1	Intermediate jib section			12.10	1.81	2.30	⊙ 3800
	12.10				1.81	2.30	⊙ 4040	
	12.10				1.81	2.30	⊙ 3560	
	12.10				1.81	2.30	⊙ 3570	
	12.10				1.81	2.30	⊙ 2840	
		6.40	1.81	2.30	⊙ 2000			
12	1	Jib head section			5.71	1.81	2.53	⊙ 1350
13	1	Trolley with loadhook			2.40	2.10	1.40	1800
14	1	Hoist gear unit			4.35	2.55	1.75	6900
15	1	A-frame I			8.20	0.48	1.41	780
<b>Turn</b>								
16	15	Tower section			6.28	1.00	1.80	5800
					4.35	2.55	1.75	6900
<b>Klettereinrichtung</b>								
17	4	Guide section			12.40	2.42	2.27	3750
18	1	Hydraulic unit, supporting and climbing cross members			3.80	1.00	1.10	3360
<b>Unterwagen</b>								
19	4	Pivot for wheel box			2.65	0.70	0.72	2600
20	4	Gudgeon			1.55	0.84	0.64	1250
21	4	Driven bogie			2.20	1.10	1.10	2200
22	4	Non-driven bogie			1.90	0.60	1.10	1700
23	1	Long support arm			9.14	1.30	1.32	3700
24	2	Short support arm			8.94	1.30	1.31	3400
25	4	Strut			3.43	0.10	0.56	150
26	4	Border support			11.20	0.22	0.18	700
27	4	Support strut			7.70	0.46	0.50	1600
28	1	Undercarriage tower section, 4 Teile			7.33	2.40	2.40	2900
29	1	Small parts, ropes and holding bars			2.00	1.00	1.00	2500