

SG-ZCM8050ND(-O)

- 4K/8Megapixel 50x Long Range Zoom Network and Digital Dual Output Camera Module



1. Features

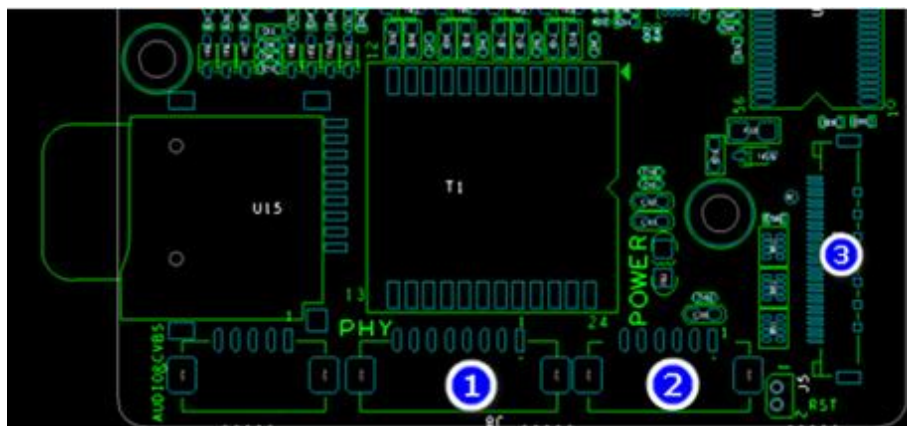
- > 1/1.8" Sony Exmor CMOS Sensor.
- > Powerful 50x optical zoom (6~300mm).
- > Max. 4K/8Mp(3840x2160) Resolution
- > Support various IVS functions
- > Support Electronic Defog, and Optical Defog (Optional)
- > Support video output from the network port.
- > Support various OSD information overlay.
- > **Support LVDS digital video output synchronously.**

2. Specification

Model		SG-ZCM8050ND(-O)
Sensor	Image Sensor	1/1.8" Sony Exmor CMOS
	Effective Pixels	Approx. 8.42 Megapixel
	Max. Resolution	3840(H) x 2160(V)
Lens	Focal Length	6mm~300mm, 50x Optical Zoom
	Aperture	F1.4~F4.5
	Close Focus Distance	1m~5m (Wide~Tale)
	Angle of View	59°~1.8°
Video Network	Compression	H.265/H.264/H.264H/MJPEG
	Storage Capabilities	TF card, up to 128G
	Network Protocol	Onvif, GB28181, HTTP, RTSP, RTP, TCP, UDP
Resolution		50Hz: 25fps@4K/8Mp(3840x2160) 60Hz: 30fps@4K/8Mp(3840x2160)
LVDS Video		50Hz: 25/50fps@2Mp(1920x1080) 60Hz: 30/60fps@2Mp(1920x1080)

Firmware Upgrade(LVDS)	Only can upgrade the firmware via Network port.
IVS	Tripwire, Cross Fence Detection, Intrusion, Abandoned Object, Fast-Moving, Parking Detection, Crowd Gathering Estimation, Missing Object, Loitering Detection.
S/N Ratio	≥55dB (AGC Off, Weight ON)
Minimum Illumination	Color: 0.01Lux/F1.4, Black & White: 0.001Lux/F1.4.
Exposure Compensation	ON/OFF
Strong Light Suppression	ON/OFF
Electronic Defog	ON/OFF
Optical Defog(Optional)	Night Mode, 750nm~1100nm channel is Optical Defog
Zoom Speed	Approx 7s(Optical Wide-Tele)
White Balance	Auto/Manual/ATW/Indoor/Outdoor/ Outdoor Auto/ Sodium lamp Auto / Sodium lamp
Electronic Shutter Speed	Auto Shutter (1/3s~1/30000s) Manual Shutter (1/3s~1/30000s)
Exposure	Auto/Manual
2D Noise Reduction	Support
3D Noise Reduction	Support
Flip	Support
External Control	TTL
Communication Interface	Compatible with the SONY VISCA Protocol
Focus Mode	Auto/Manual/Semi-automatic
Operating Conditions	(-30°C~+60°C/20% to 80%RH)
Storage Conditions	(-40°C~+70°C/20% to 95%RH)
Power Supply	DC 12V±15% (Recommend: 12V)
Power Consumption	Static power: 5W, Sports power: 6W
Dimensions(L*W*H)	Approx. 175mm*72mm*77mm
Weight	Approx. 900g

3. Interface Definition:



Network Interface

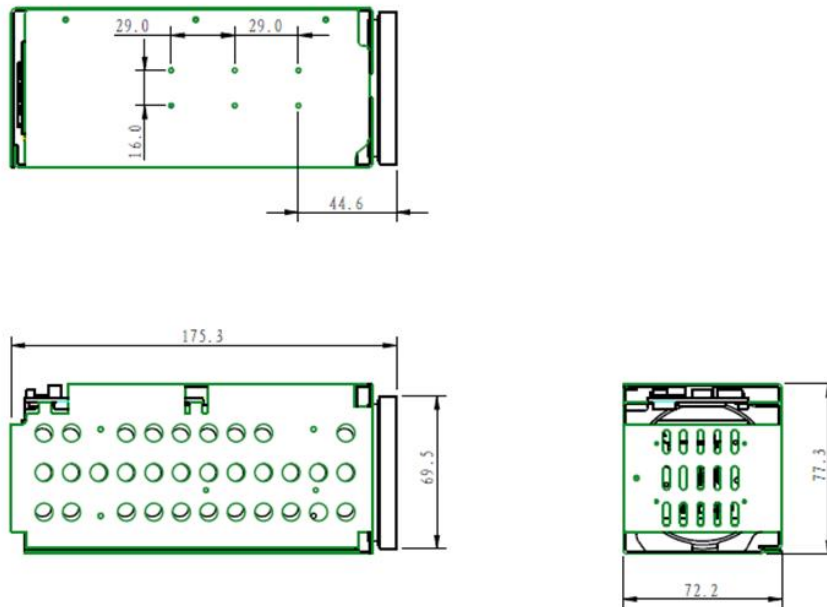
Type	PIN Number	PIN Name	Description
(1) 8PIN Internet Interface	1	ETHRX-	Adaptive Ethernet port, Internet RX-
	2	ETHRX+	Adaptive Ethernet port, Internet RX+
	3	ETHTX-	Adaptive Ethernet port, Internet TX-
	4	ETHTX+	Adaptive Ethernet port, Internet TX+
	5	RFU0	Gigabit Ethernet port compatibility
	6	RFU1	Gigabit Ethernet port compatibility
	7	RFU2	Gigabit Ethernet port compatibility
	8	RFU3	Gigabit Ethernet port compatibility
(2) 6PIN Power & UART Interface	1	DC_IN	DC12V±10%
	2	GND	GND
	3	RXD1	TTL 3.3V, Pelco Protocol
	4	TXD1	TTL 3.3V, Pelco Protocol
	5	RXD0	TTL 3.3V, Visca Protocol
	6	TXD0	TTL 3.3V, Visca Protocol
(3) 5PIN Audio & Video Interface	1	AUDIO_OUT	Audio Out(Line Out)
	2	GND	GND
	3	AUDIO_IN	Audio In(Line In)
	4	GND	GND
	5	VIDEO_OUT	Analog Video Out(CVBS)

LVDS Interface

Port	Number	PIN Name	Description
(3) LVDS interface (Similar to SONY 30PIN Digital Interface)	1	TXOUT3+	
	2	TXOUT3-	
	3	TXOUTCLK+	
	4	TXOUTCLK-	
	5	TXOUT2+	
	6	TXOUT2-	
	7	TXOUT1+	
	8	TXOUT1-	
	9	TXOUT0+	
	10	TXOUT0-	
	11	GND	Ground PIN
	12	UART1_TX	VISCA Protocol: RS-232 Camera Transmit Signal, the same to (2)TXD1 of 6PIN Port. But cannot connect at the same time. SG Camera is CMOS 3.3V, SONY Camera is 5V.
	13	UART1_RX	VISCA Protocol: RS-232 Camera Receive Signal, the same to (2)RXD1 of 6PIN Port. But cannot connect at the same time. SG Camera is CMOS 3.3V, SONY Camera is 5V.

14	DC_IN	DC Power input (DC+7V~+12V)
15	DC_IN	
16	DC_IN	
17	DC_IN	
18	DC_IN	
19	GND	Ground PIN
20	GND	
21	GND	
22	GND	
23	GND	
24	GND	
25	NC	
26	NC	SG-ZCM2090ND: Replace Hardware Reset with Software Reset SONY Camera: CAM_RESET
27	NC	SONY Camera: CVBS_OUT
28	NC	SONY Camera: Y, Pb, Pr Signal
29	NC	
30	NC	

4. Dimension



Hangzhou Savgood Technology Co., Ltd.

Rm. 701, Xincheng Fazhan Building #1, No. 406 Xintiandi Street,
 Xiacheng District, Hangzhou City, 310004, China
 Tel: +86 - (571) 8803 8121
 Email: sales@savgood.com
 http://www.savgood.com

*Design and specifications are subject to change without prior notification.
 © 2013 Savgood Technology Co., Ltd.