



SAY SKIN

makes your skin Beauty Full

CONTENTS

- COMPANY PROFILE
- OVERVIEW
- DESCRIPTION OF PRODUCTS
- REFERENCE
- CORE TECHNOLOGIES
- HOW IT WORKS
- COMPARISON TABLE
- CLINICAL TRIAL
- HOW TO USE
- PATENTS & CERTIFICATES

Company Profile



Company Name	WITHNIX Co., Ltd.
Date of Establishment	October 1st, 2003
Head Office	593-14, Opo-ro, Opo-eup, Gwangju-si, Gyeonggi-do, Republic of Korea
Subsidiary	WITHNIX Shenzhen Co., Ltd. (China)
Home Page	www.withnix.co.kr en.say-skin.com

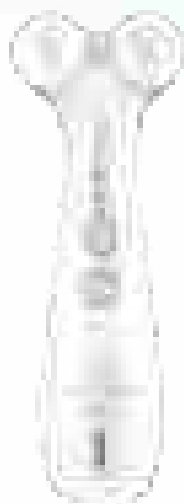
Engineering Background Qualified by

The Samsung logo, consisting of the word "SAMSUNG" in white capital letters inside a blue oval.

Withnix' CEO and Engineering Directors had worked in Samsung Electronics for 17 years as the leading experts of development and manufacturing.

AURORA⁺

AURORA-*lite*



Description

AURORA⁺



BRAND	SAY SKIN
CATEGORY / PRODUCT	Beauty Device / AURORA+
BENEFITS FOR SKIN	<p>* PROMOTION ABSORPTION OF COSMETICS Boosts the absorption of effective ingredients of skin care products to provide strong protection for the dermis.</p> <p>* TROUBLE CARE Solves problems of skin trouble and irritation caused by Exposure to pollutants, such as fine dust, once and for all.</p> <p>* WRINKLE TREATMENT & SKIN TIGHTENING Helps tighten skin and reduces wrinkles.</p> <p>* WHITENING AND SKIN TONE UP Improves dull complexion and skin blemishes and provides A strong skin whitening effect.</p>
TECHNOLOGIES	Plasma, Microcurrent
MATERIALS	[Body] PC+ABS / [Heads] Zirconia ceramic
SIZE / WEIGHT	47.0(W) * 184.5(L) * 56.1(H)mm / 185g
POWER TYPE	DC 5V, 1A (USB-C type)
BATTERY	Li-Polymer Battery 1,000mAh
CERTIFICATION	KC, CE, FCC
COUNTRY OF MANUFACTURE	Republic of KOREA
COLOR	WHITE, BLACK

Description

AURORA-*lite*



BRAND	SAY SKIN
CATEGORY / PRODUCT	Beauty Device / AURORA-lite
BENEFITS FOR SKIN	<p>* PROMOTION ABSORPTION OF COSMETICS Boosts the absorption of effective ingredients of skin care products to provide strong protection for the dermis.</p> <p>* TROUBLE CARE Solves problems of skin trouble and irritation caused by Exposure to pollutants, such as fine dust, once and for all.</p> <p>* WRINKLE TREATMENT & SKIN TIGHTENING Helps tighten skin and reduces wrinkles.</p> <p>* WHITENING AND SKIN TONE UP Improves dull complexion and skin blemishes and provides a strong skin whitening effect.</p>
TECHNOLOGIES	Plasma
MATERIALS	[Body] PC+ABS, Aluminum / [Heads] Zirconia ceramic
SIZE / WEIGHT	30.3(W) * 155(L) * 52(H)mm / 103g
POWER TYPE	DC 5V, 1A (USB-C type)
BATTERY	Li-Polymer Battery 700mAh
CERTIFICATION	KC, CE, FCC, CVC
COUNTRY OF MANUFACTURE	Republic of KOREA
COLOR	WHITE, PINK

Aesthetic Test for improving Skin trouble

*Using AURORA+ with the serum for 10~13minutes everyday



- Target : A boy in his 10's / Forehead and Cheek
- Solution : 7 times with the solution
- Result : Comparison of changes before and after caring with the solution on the face

Aesthetic Test for improving Skin trouble

*Using AURORA+ with the serum for 10~13minutes everyday



- Target : A woman in her 20's / Forehead and Cheek
- Solution : 12 times with the solution
- Result : Comparison of changes before and after caring with the solution on the face

Aesthetic Test for improving Skin trouble

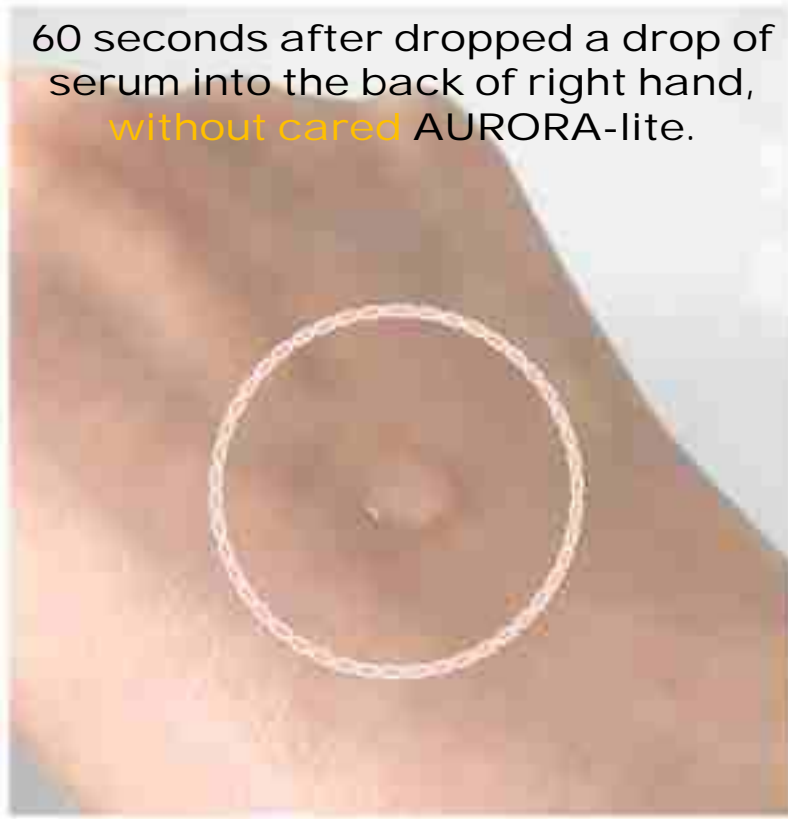
*Using AURORA+ with the serum for 10~13minutes everyday



- Target : A woman in her early 30's / Forehead and Cheek
- Solution : 13 times with the solution
- Result : Comparison of changes before and after caring with the solution on the face

Self-Test for absorption ability of cosmetics

60 seconds after dropped a drop of serum into the back of right hand, **without cared** AURORA-lite.



VS

3 seconds after dropped a drop of serum into the back of left hand, **cared with** AURORA-lite for 2 minutes.



* Result : The serum is immediately absorbed into the skin cared with AURORA-lite.

PLASMA



**Cutting-Edge, the 4th material,
Proven harmless to the human body.**

- Promotion of skin regeneration.
- Strong sterilization effect.
- Promotion of cosmetic absorption.

MICROCURRENT



A Mega-trend of beautifying device.

- Promotion of Skin elasticity and pore reduction.
- Promotion of physical metabolism.

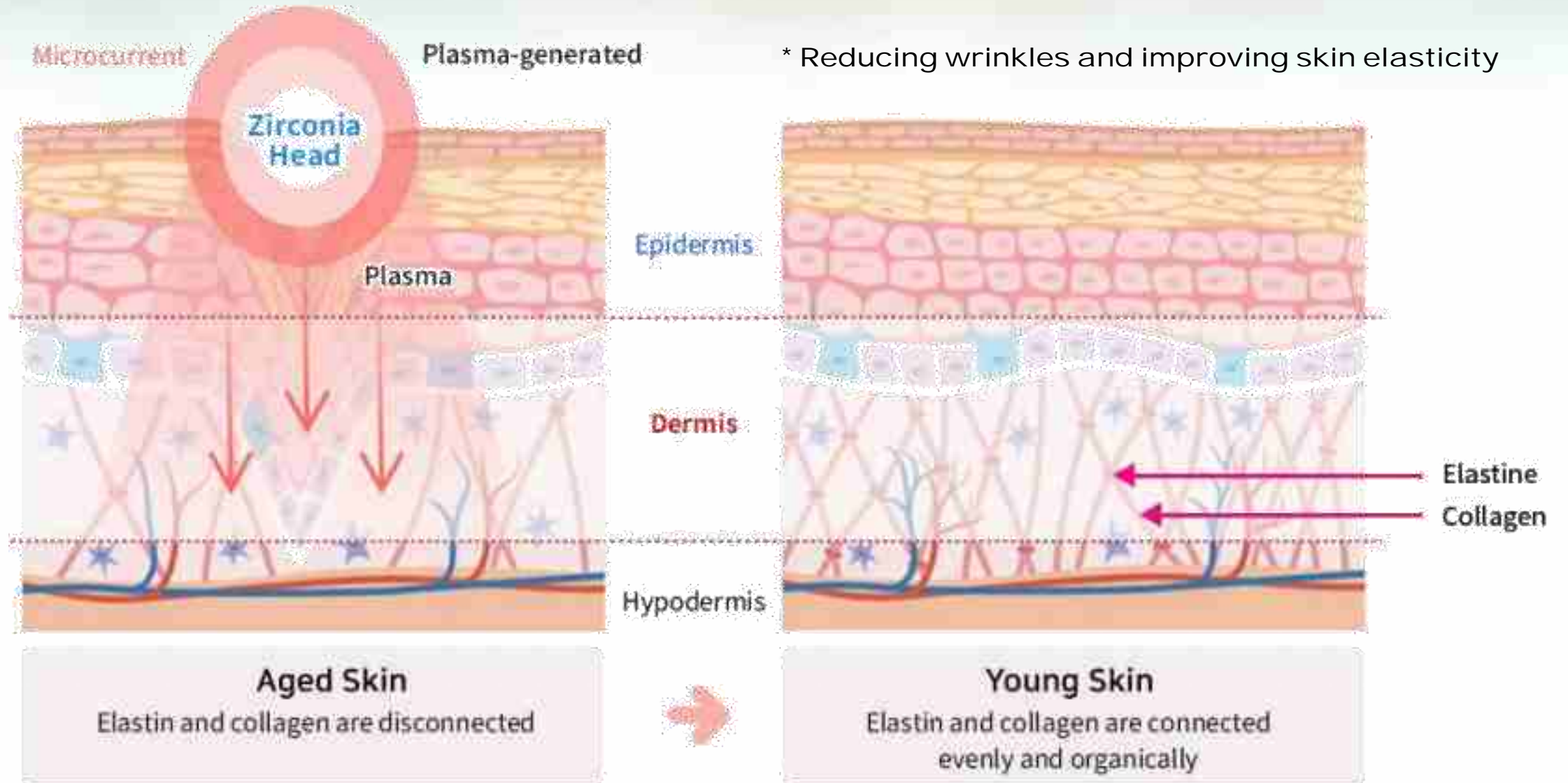
ZIRCONIA



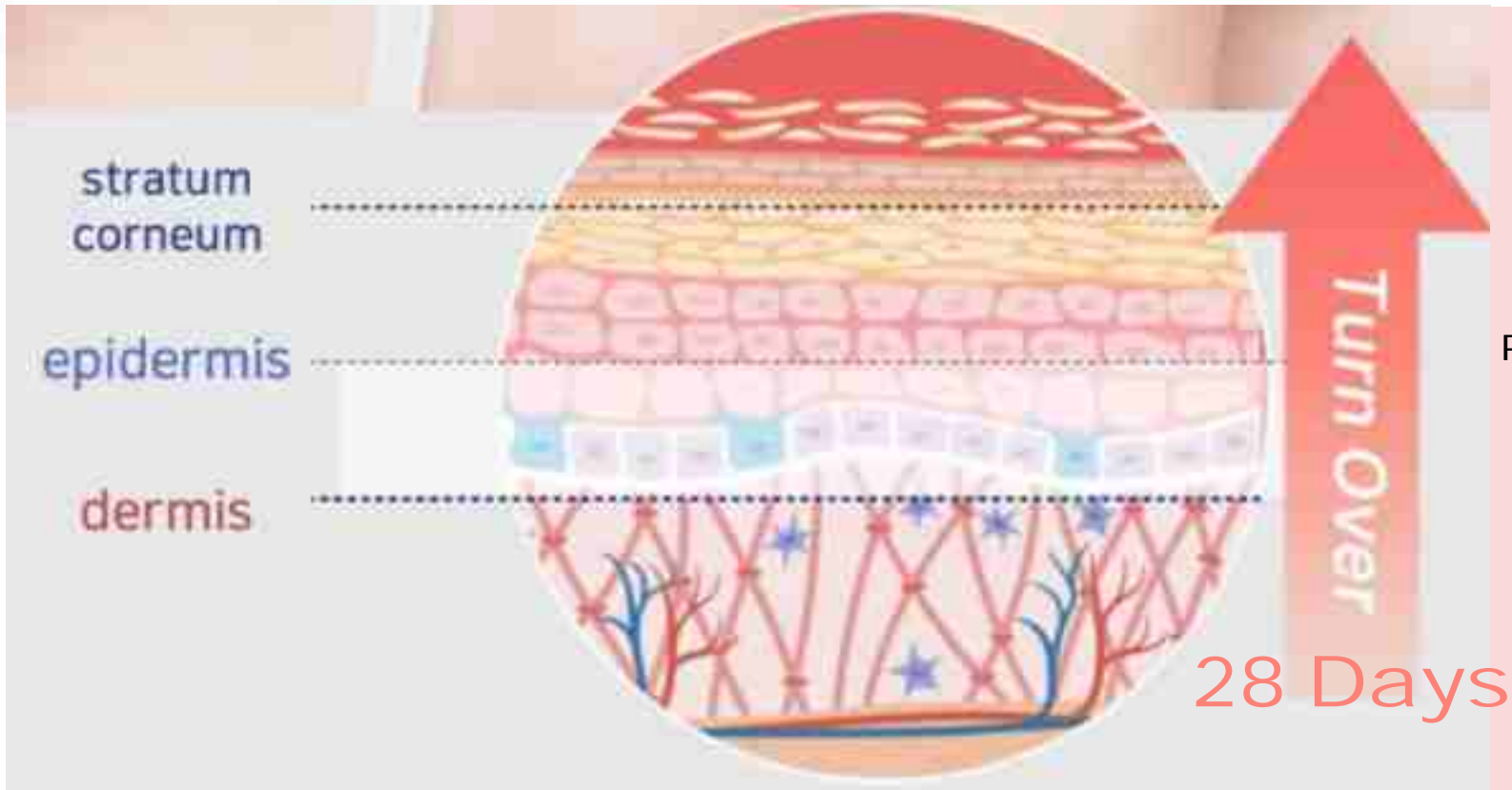
A Safe and Eco-friendly Ceramic.

- A high-strengthened, precise and eco-friendly ceramic to emphasize safety.

How it works



How it works



* Whitening and improving skin texture

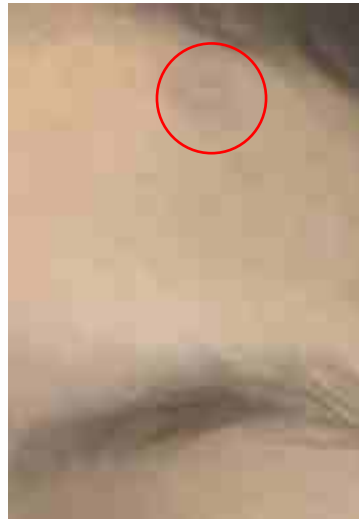
Plasma causes the desquamation which eliminates keratin mass, dead keratin cells and various kinds of contaminant.

How it works

Before



After



Source : Non-Thermal Plasma for Acne and Aesthetic Skin Improvement

* Making skin troubles get better

A hydroxyl group (OH radical), an oxygen-anionic natural substance produced when plasma is generated, has the strongest sterilizing power on the earth.

Sterilizes, deodorizes and decomposed by directly engaging in contaminants in air and water.

Sterilizing rate 2,000 times and 180 times faster than ozone and solar UV ray

How it works

Cell Membrane



Before
Plasma
Pulse



During
Plasma
Pulse




After
Plasma
Pulse

* Improving the skin's ability to absorb cosmetic active ingredients

“Plasmaporation = Plasma + Electroporation”

**Electroporation: the creation of transient pores in the cell membrane, through the application of a high-voltage electrical pulse.*

Comparison with Competitors

Model Name	 SAY SKIN AURORA+		 SAY SKIN AURORA-<i>lite</i>	 NuFace Trinity	 MEDICUBE Age-r Booster Pro	 LG Pra.L LED Mask	 Dual Sonic Maximum
Pictures							
Country	WITHNIX / KOREA			USA	KOREA	KOREA	KOREA
Technology	PLASMA, MICROCURRENT, PLASMA-PORATION, GUASHA		PLASMA, PLASMA-PORATION	MICROCURRENT, GUASHA	MICROCURRENT, ELECTROPORATION, LED	LED	HIFU, RF, MICROCURRENT, LED
Effectiveness	Promotion Cosmetics Absorption, Elasticity, Whitening, Trouble Care (e.g., atopic dermatitis/acne) etc			Effectiveness on blood circulation, improvement of elasticity	Whitening, Promotion cosmetics absorption, Collagen activeness	Anti-Aging	Whitening, Promotion cosmetics absorption, Improvement of Elasticity
MSRP	\$ 250		\$ 145	\$ 260	\$ 290	\$ 510	\$ 1,100

Comparison with Competitors

(Plasma Devices) *Source : Withnix research and development department*

1.

Division	Pla Beau	AURORA ⁺
Number of pulse per second	3,609	4,200
Number of pulse per second / Rate	85%	100%
Vrms of each pulse	545	590
Vrms of each pulse / Rate	92%	100%
Total PLASMA generation energy ratio	79%	100%
	100%	126%

* While the quantity or intensity of the plasma generated cannot be directly measured, the energy required for plasma generation can be considered to vary according to the potential applied to the head surface. Therefore, it is deemed valid to evaluate by comparing the electrical energy values measured on the head surface.

CONCLUSION

AURORA+ supplies 1.259 times stronger plasma generation energy compared to Pla Beau.

2.

Division	Plasma Shower	AURORA ⁺
Number of pulse per second	5,152.5	4,200
Number of pulse per second / Rate	122%	100%
Vrms of each pulse	350	590
Vrms of each pulse / Rate	59%	100%
Total PLASMA generation energy ratio	72%	100%
	100%	137%

CONCLUSION

AURORA+ supplies 1.373 times stronger plasma generation energy compared to Plasma Shower.



SAY SKIN

Clinical Trial

AURORA+ TEST

- Clinical institution : Korea Institute of Dermatological Sciences
- Clinical period : 6 weeks
- Test subject : 21 people, women aged 40-69 years old
- Evaluation item : Lifting of eye bag area under eyes, nasolabial area lifting, eye lifting, skin elasticity, skin density, skin tone

AURORA LITE TEST

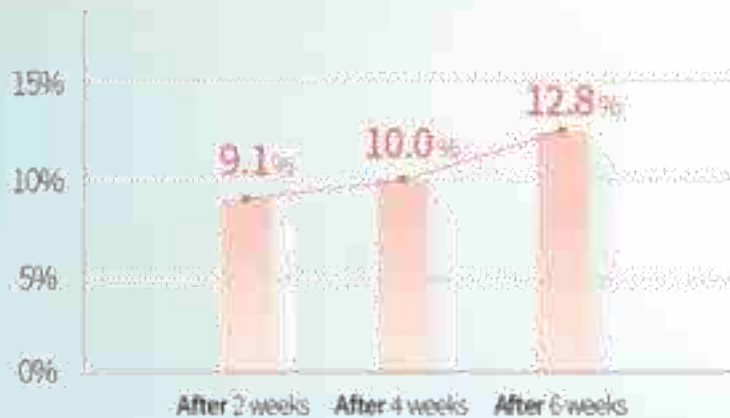
- Clinical Institution : H&Bio SRC
- Clinical Period : June 7th ~ 21st, 2021 (2 weeks)
- Test subject : Dermalab Full Skin 3cm x 3cm / Acety-Hexapeptide-8(Lys-FITC)
- Evaluation Item : The ability of absorption cosmetics active ingredients

- Clinical institution : OATC
- Clinical period : 2 weeks
- Clinical subject : 22 people, women aged 30-60 years old
- Evaluation item : The effect of skin elasticity for AURORA-lite with the ampoule

The Effect of Skin Lifting

REF. Color of improved skin : Yellow (the best) > Green > Blue > Purple (the worst)

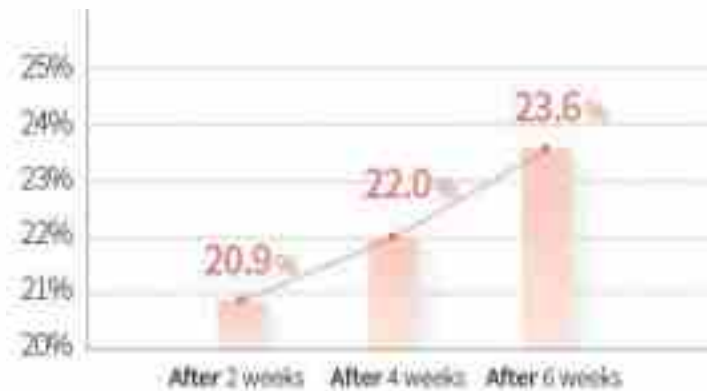
Under Eye Bags



Nasolabial Folds



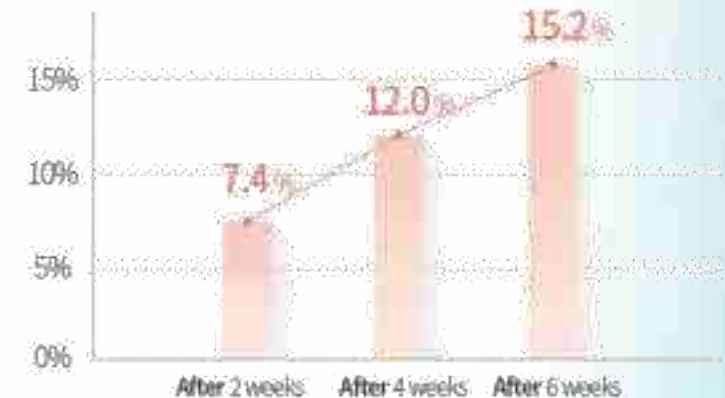
Before use Immediately after use 6 weeks after use



Crow's Feet

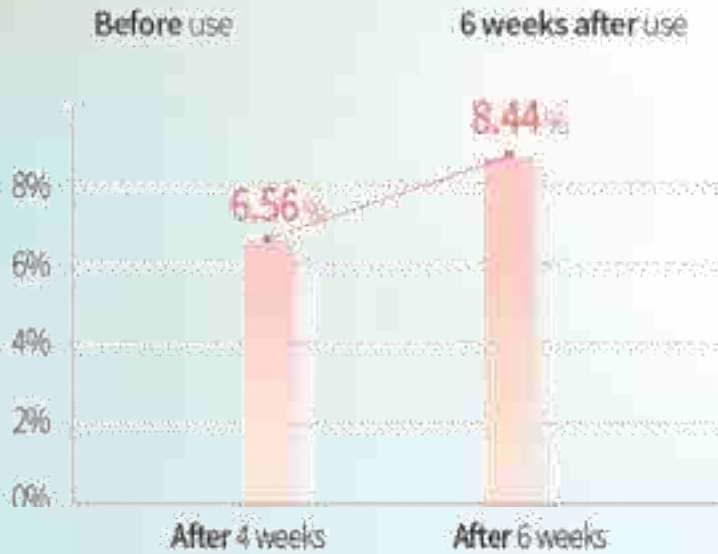
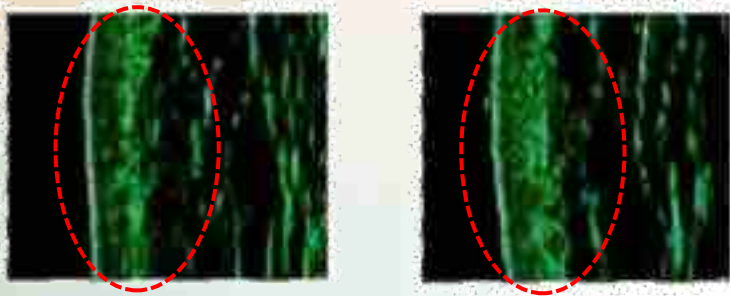


Before use Immediately after use 6 weeks after use

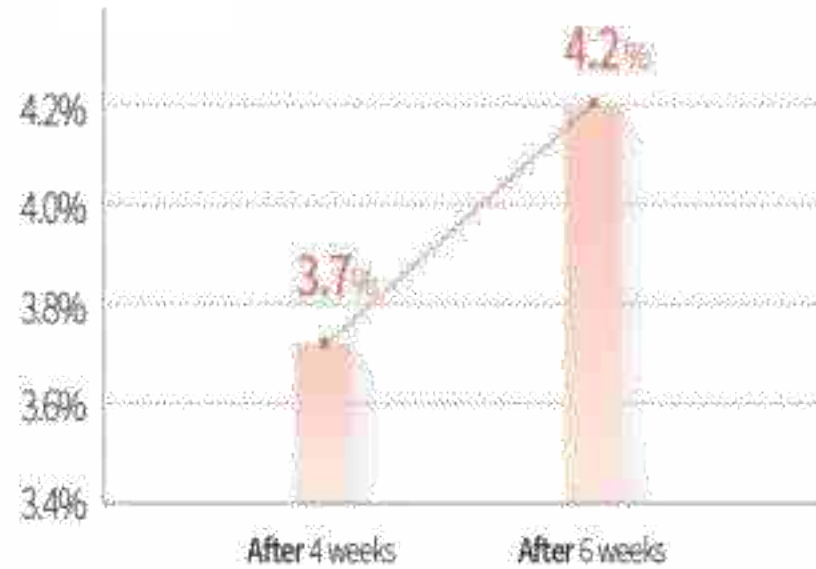


The Effect of

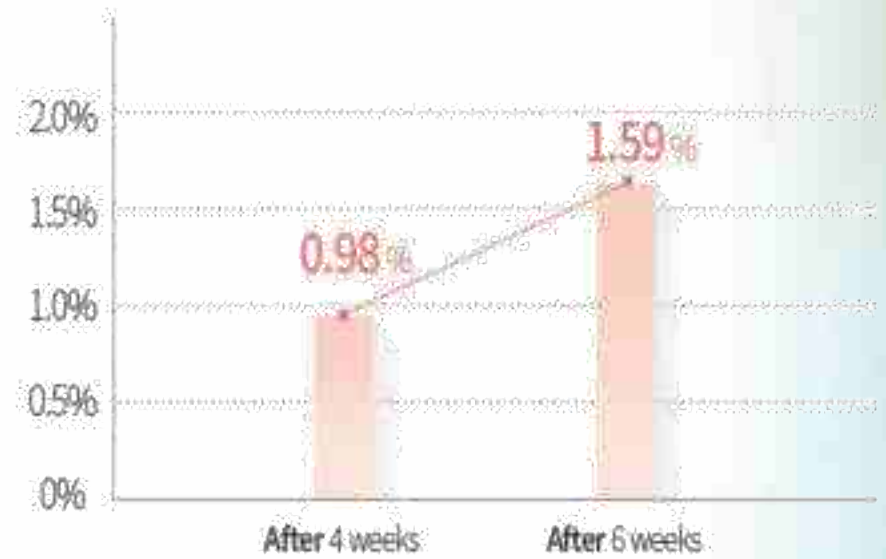
Skin Density



Skin Elasticity

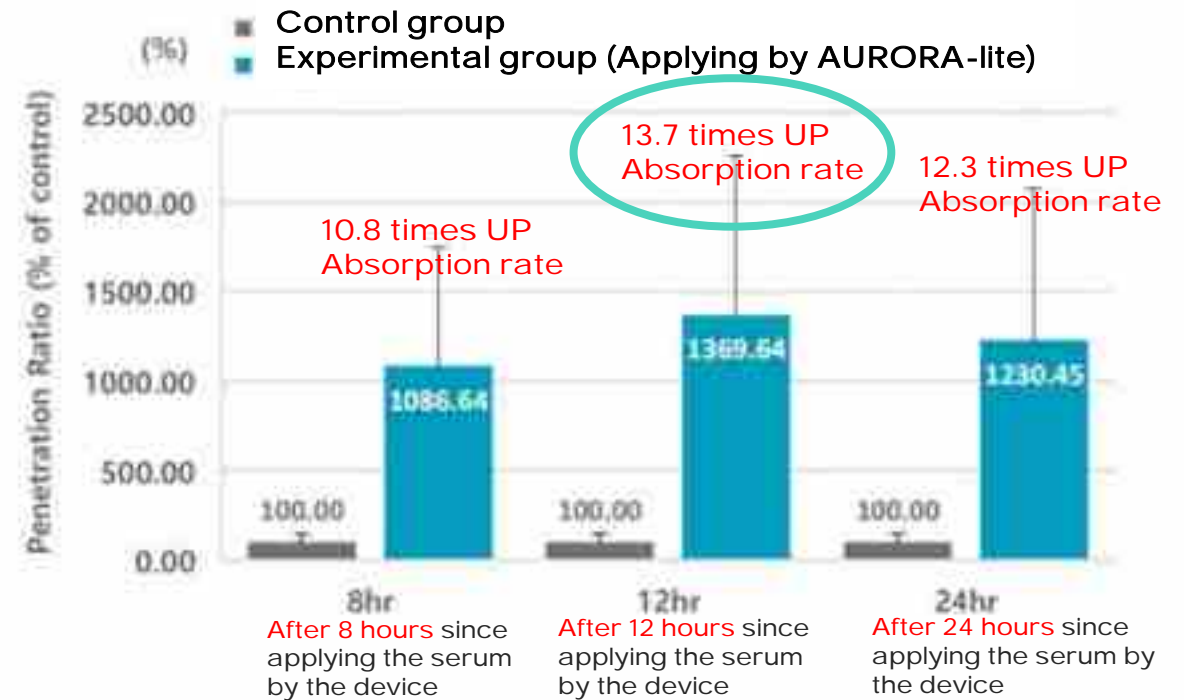
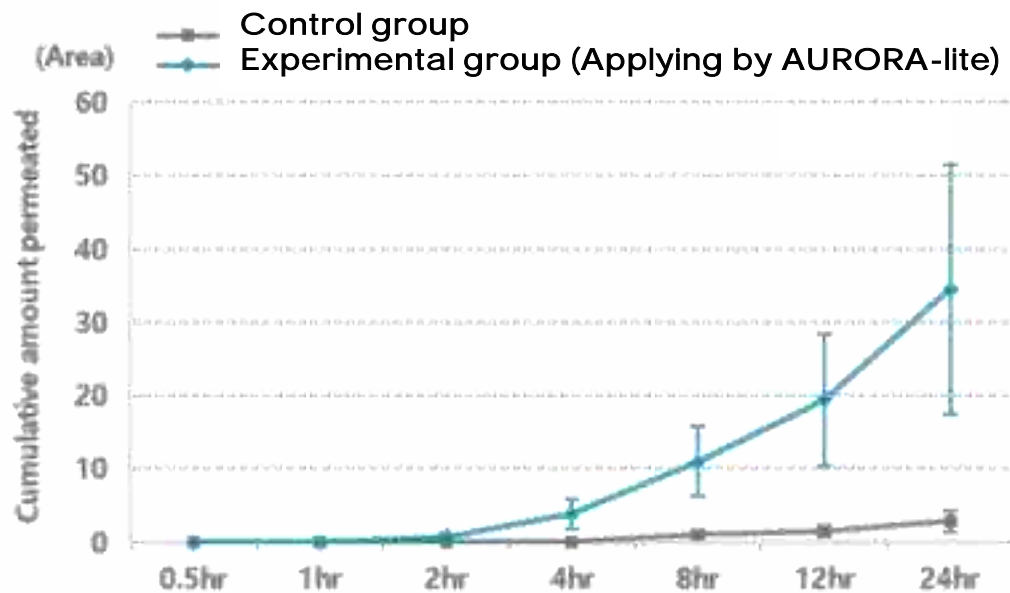


Skin Tone



The ability of absorption of cosmetics active ingredients

* Comparison of skin absorption ex vivo human skin tissue

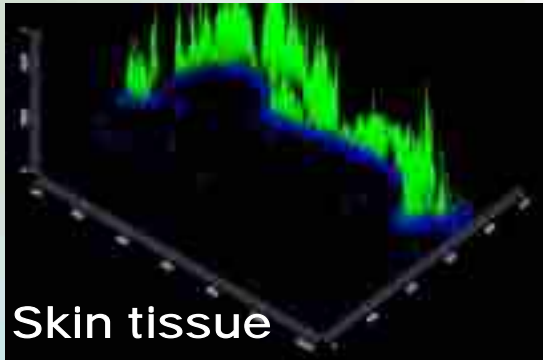


* More being absorbed the active ingredients of the serum into skin by the device than applying the serum by hand as below.

The ability of absorption of cosmetics active ingredients

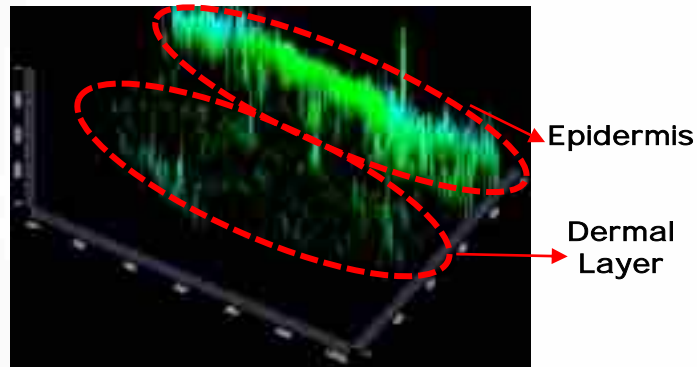
After 1 hour

The group by hand



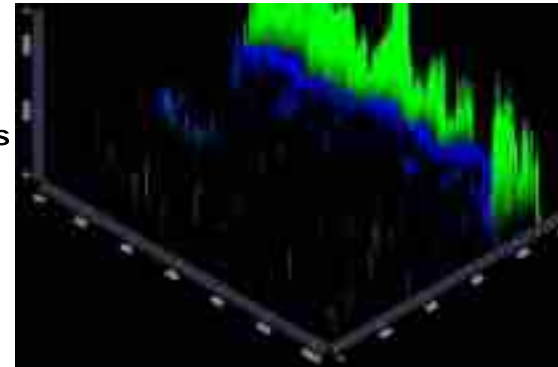
VS

The group by AURORA-lite



After 24 hours

The group by hand



VS

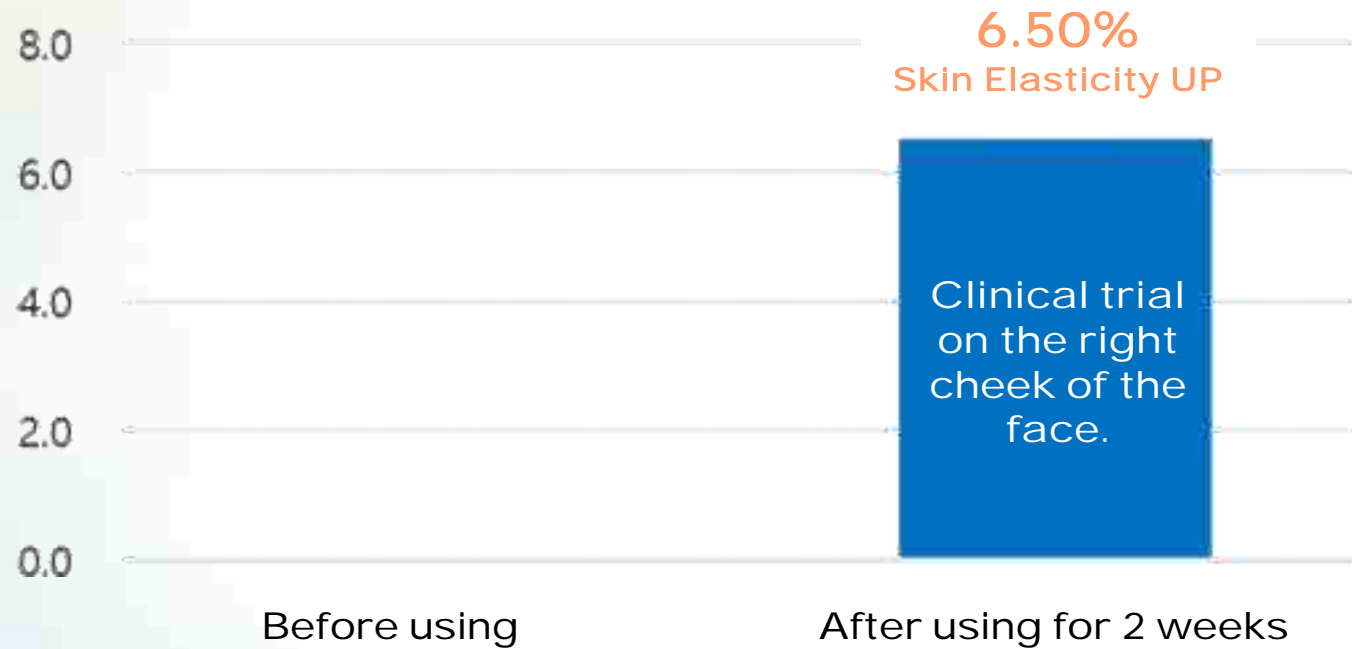
The group by AURORA-lite



REF. The substance in green is like a cosmetic active ingredient.

The Effect of Skin Elasticity

* Comparison of skin elasticity improvement



Post-clinical survey

SAY SKIN

Q1. Skin Abnormalities 0%



Q2. Satisfaction with the effect 95.2%



Q3. Overall satisfaction with feeling of use 95.2%



Q4. Ease of use 100%



Q5. Convenience of maintenance, management and storage 100%



* The results of the post-clinical survey showed the **generally high satisfaction level** with this product.

Material & Design

SAY SKIN

HEAD

- ✓ Using **Zirconia**, a harmless and eco-friendly material.
- ✓ **A cool feeling** reduces warmth during skin massage.
- ✓ Optimized structure of spacing and angle **between heads and head ball size** to care for curved areas such as **jawline, bridge of the nose, cheekbones.**



BODY

- ✓ Safe **PC+ABS** material.
- ✓ **UV coding** treatment prevents surface deterioration by cosmetics.
- ✓ Optimized design of long body with a **streamlined structure and grip to care for all parts of the body** such as nape, the back of the neck and the clavicle.

Operation Button

- ✓ With the buttons and displays located on the front, convenient UI design to operate with one thumb while holding the product.

Area-Specific Intensive care

• Forehead Care

Please use it in a repeating motion from the **eyebrow line** to the **hairline**, moving upward from bottom to top.

• Cheek Care

Please care for the headballs by moving from **left to right** and from **inside to outside** in a repetitive motion.

• Neck Care

Avoiding the **thyroid area** in the front of the neck, Please use the headballs from **bottom to top**.



Eye Area Care

Close your eyes and use **one or two headballs**, moving them in a **back-and-forth** motion under the eyes to the eye bags.

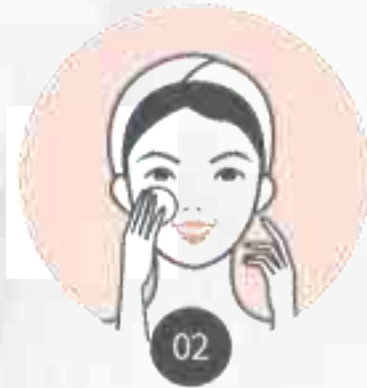
Jawline Care

Please use the headballs in an upward direction from **bottom to top** for jawline.

#HOW TO USE AURORA⁺



01
Please tidy up
your skin
after washing
your face.
Remove any
remaining
moisture
on your skin.



02
Please apply
your skincare
products evenly.



03
Please activate
the power button.



04
Please choose
your desired
level and
use it on
different areas
for about
5 to 10
minutes.

Patents & Certificates



GOOD DESIGN



Title of Invention
"Atmospheric Pressure Plasma Device
Having Function of Providing Microcurrent"

Title of Invention
"Portable Beautifying Apparatus Using Plasma"

A woman's face is the central focus, with a white sheet covering her eyes and mouth. She is surrounded by various skin care products, including bottles and tubes, all in a light, monochromatic color scheme. The background is a soft, out-of-focus white.

THANK YOU

Export Manager
: Chan Woo Jung

Email : chan@withnix.co.kr
Mobile : +82-10-3585-0464
Whatsapp : ChanWithnix
Wechat : ChanWithnix

Direct. 070-4338-3831
Withnix Co. Ltd /
<http://en.say-skin.com/>
<https://www.youtube.com/@sayskinbeautycare7628/>
© 2024 WITHNIX. All rights reserved