

铜粉 Copper Powder

应用范围 (Application)

用于制造多层陶瓷电容器 (Multi-Layered Ceramic Capacitor) 的终端和内部电极、电子元件的电子浆料等。

Apply to manufacture the termination and internal electrode of Multi-Layered Ceramic Capacitor and electronic pastes.

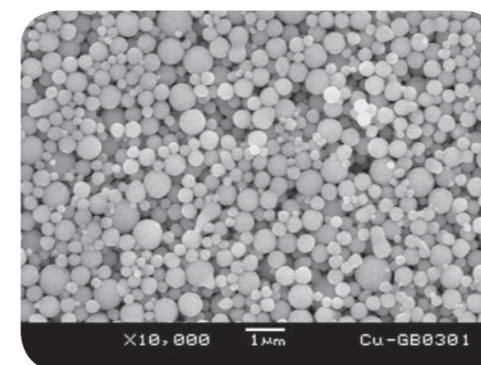
产品特性 (Features)

- ◎ 粒径均匀 Uniform particle size
- ◎ 纯度高 High purity
- ◎ 结晶度高 High crystallinity
- ◎ 分散性好 Good dispersion property
- ◎ 抗氧化性能强 Strong resistance to oxidation

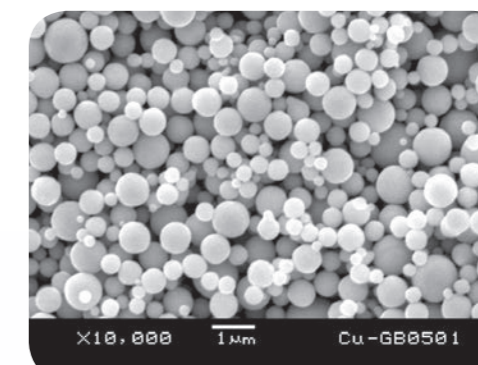
产品规格 (Product specification)

规格 Specification	平均粒径 Mean Particle Size (μm)	比表面积 Specific Surface Area (m^2/g)	粒度分布 Particle Size Distribution (μm)			振实密度 Tap Density (g/cm^3)
			D10	D50	D90	
Cu-GB0301	0.30	1.69-2.69	≤ 0.70	≤ 1.20	≤ 2.50	≥ 2.60
Cu-GB0501	0.50	1.10-1.70	≤ 0.85	≤ 1.50	≤ 3.00	≥ 3.00
Cu-GB1001	1.00	0.50-1.00	≤ 1.50	≤ 2.50	≤ 5.00	≥ 3.50
Cu-GB2001	2.00	0.48-0.56	≤ 1.80	≤ 2.80	≤ 5.50	≥ 4.00
CuF-GB1001	-	1.00-1.50	≤ 1.50	≤ 3.50	≤ 5.50	≥ 2.50

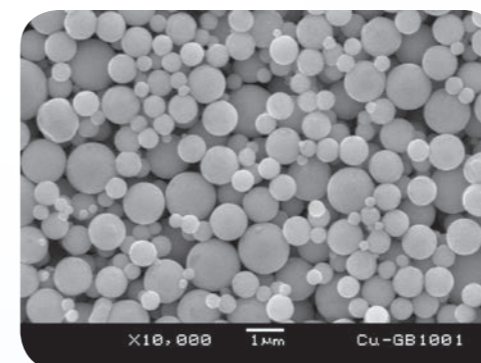
SEM 照片 (SEM photographs)



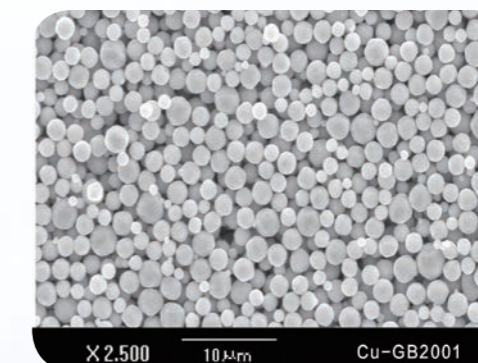
Cu-GB0301



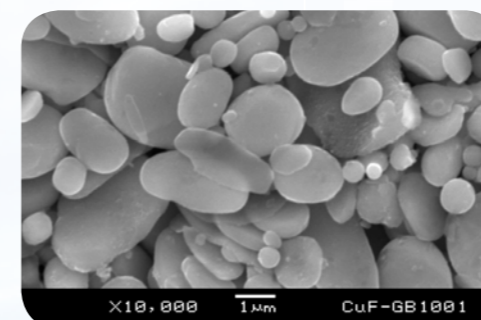
Cu-GB0501



Cu-GB1001



Cu-GB2001



CuF-GB1001

可根据客户的要求提供不同的产品。

Products customized available.